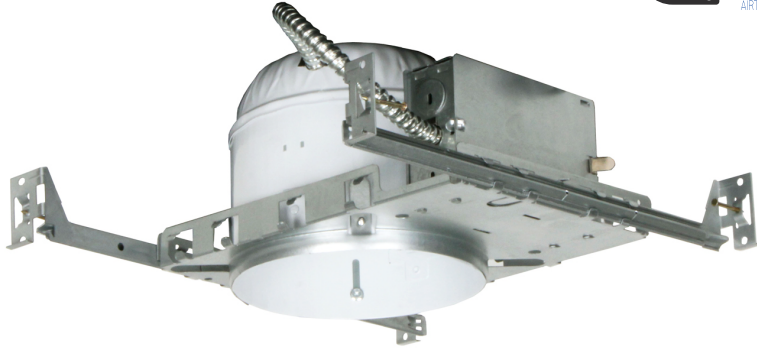
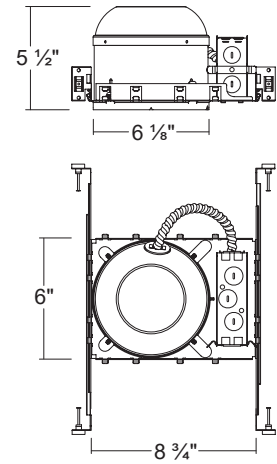


H600S

6" Non-IC Air-Tight Incandescent Shallow New construction Housing (Max. 150W)



Dimensions



ORDERING INFORMATION

Model No.	Description
H600S	6" Non-IC Air-Tight Incandescent Shallow New construction Housing (Max. 150W)

SPECIFICATION

Plaster Frame

- Galvanized steel construction. The housing can be removed from plaster frame to provide access to the junction box

Junction Box

- Listed for through branch circuit wiring
- Contains seven 7/8" knockouts and four Romex pryouts with strain relief

Bar Hanger

- Pre-installed Real nail easily installs in regular lumber, engineered lumber
- Bar Hangers are adjustable from 13-5/8" to 25" and can be repositioned 90 degree on plaster frame

Thermal Protector

- Self resetting thermal protector deactivates fixture if overheating occurs due to improper lamping or misapplied insulation.

Listings

- cULus Listed for Damp Location
- cULus Listed for Feed Through

COMPATIBLE TRIMS

T621 Albalite Shower



- **Incandescent**
60W A19

T631 Fresnel Shower



- **Incandescent**
60W A19

T601 Open Trim



- **Incandescent**
75W R / Par30

T605 Eyeball



- **Incandescent**
75W R / Par30

T661 Drop Opal Shower



- **Incandescent**
60W A19